

17th EUNIS 2011 Congress

Selection of Integrated Campus Management System: The Case of AlmaWeb

Jan Schreiter

Agenda

- Introduction
- ERP and CMS Selection Methodologies
- The Case of AlmaWeb

Introduction

- Bologna Process:
 - unification of higher education by European governments
 - homogenization of education programs
 - more coordination within and among university organizations
- Information systems of universities:
 - traditionally decentralized in nature
 - feature only a loose coupling among the organisational units

=> CMS or SIS could help to optimise and improve the current situation

ERP in comparison with CMS

- standardised and integrated application systems
 - systems aim at supporting the main business processes
 - pursue similar goals:
 1. Data integration using a common database
 2. Integration of functions by avoiding redundant functions
 3. Process integration by implementation of cross-functional activity flows
- => implementing integrated application systems is a complex undertaking

ERP Selection Methodology

- large companies derive their selection decision from a defined business and IT strategy
 - small to medium companies often only determine the particular features that are required to run their business
 - most important phase over all selection methodologies:
 - find the business vision
 - create the requirements catalogue
 - select the system
- => the most selection methodologies based on mathematical functions

CMS Selection Methodology

- similar to ERP procedures
- steps for selection a CMS:
 1. define the goals
 2. create the requirements catalogue
 3. start the software selection

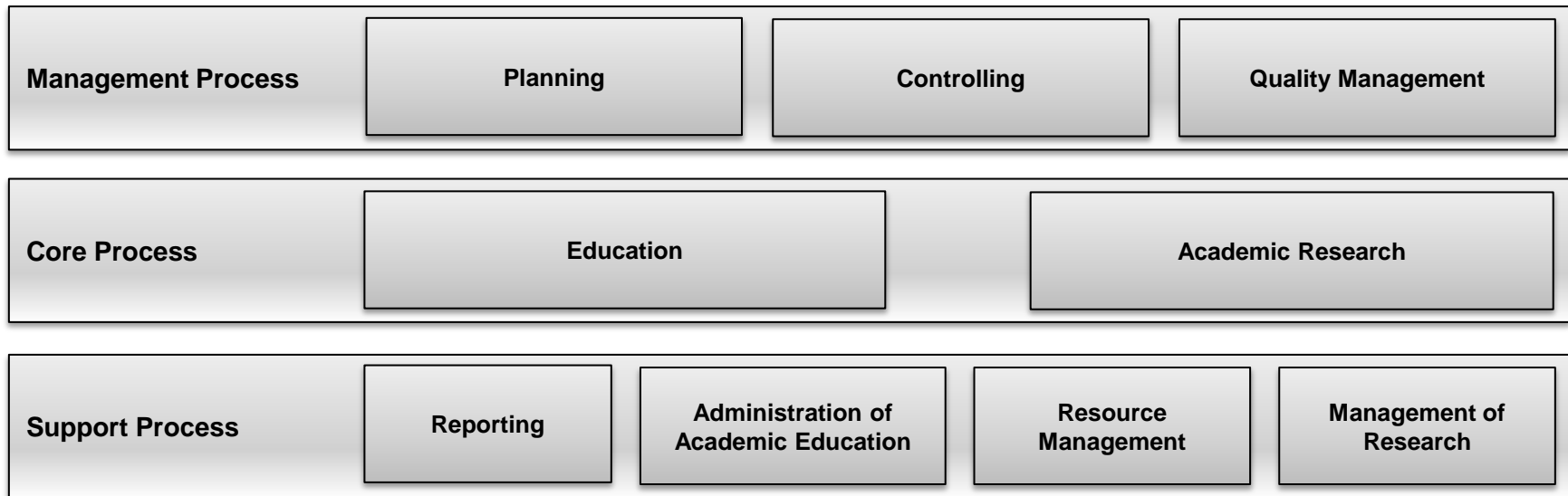
=> is cross functional in nature and impacts many processes

UL was started with a preliminary study

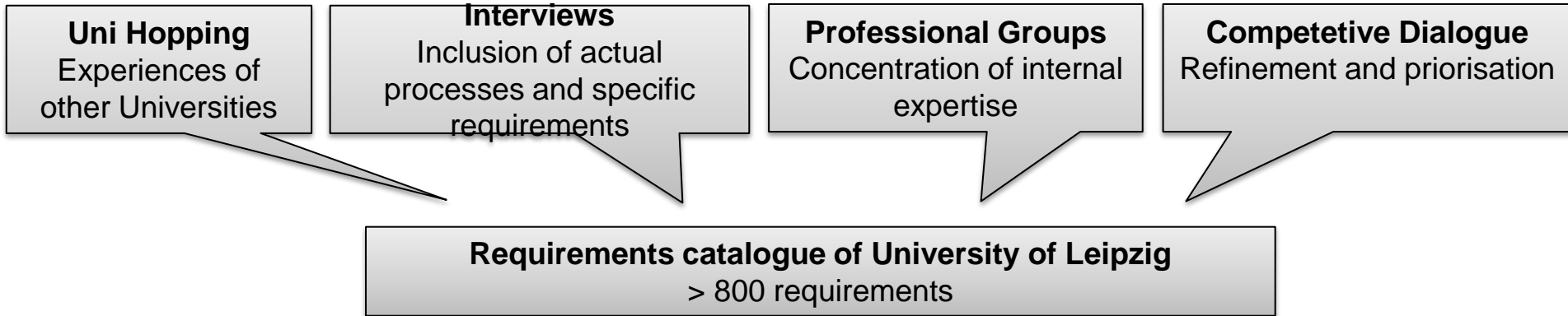
- results of preliminary study:
 - start a university wide CMS project (AlmaWeb)
 - use the competitive dialogue procedure in the selection process
 - aim for a standard software CMS solution
 - establish a suitable organizational structure
 - organise the budget for the CMS project
 - have the CMS implemented within three years
 - to have the faculty and university administration as well as the university computing centre (UCC) as a facilitator in the project

The process landscape shows the process organisation of UL

- distinguishes three categories:
 - management processes
 - core processes
 - support processes

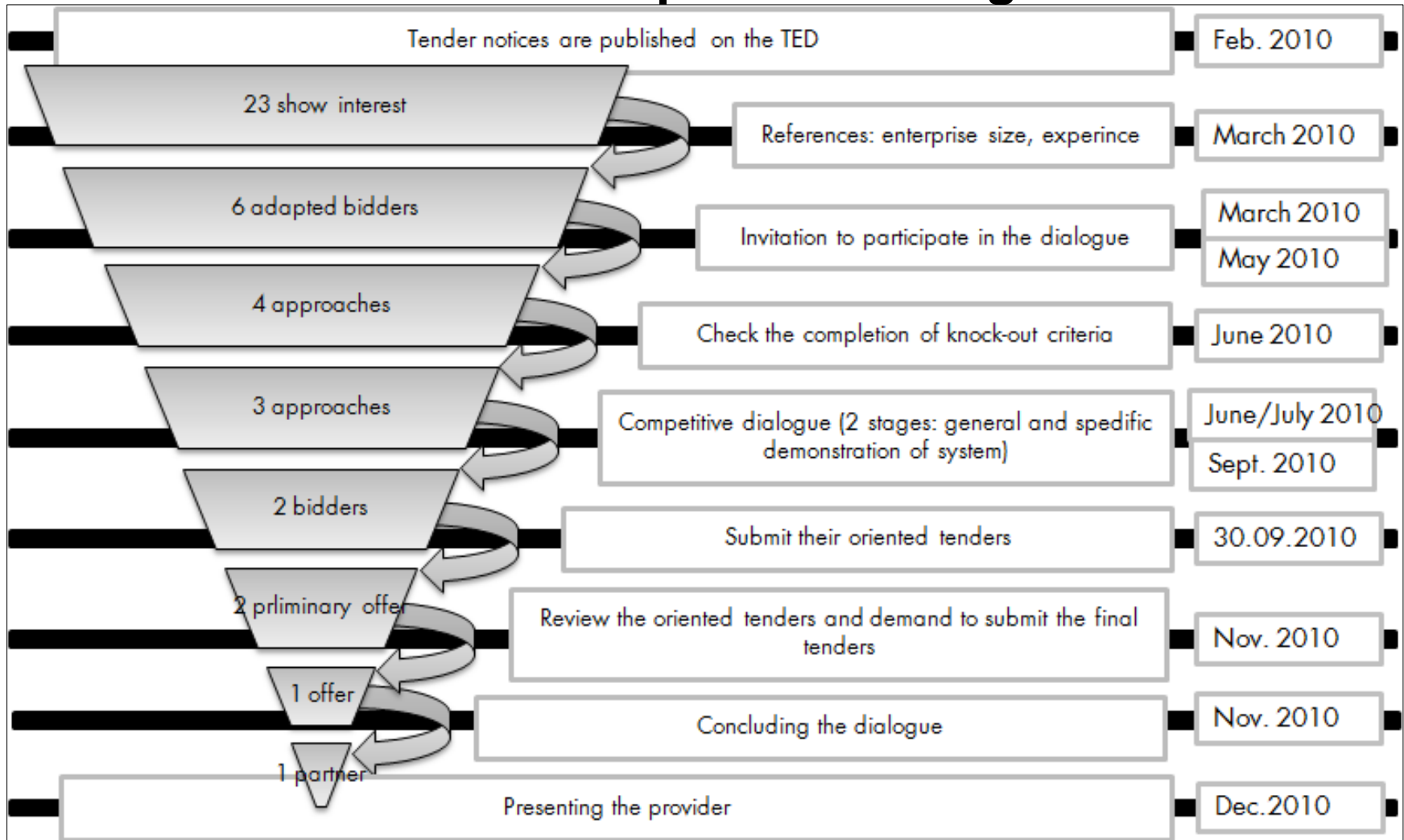


The main document for selection is the requirements catalogue



MCAT-4 Specific Functional Requirements					
No.	description of requirement	knock-out criteria	weighting of the CAT in the MCAT in %	weighting of the PRO in the CAT in %	weighting of ...
CAT-4-2 business process in administration of academic education			xx.xx		
PRO-4-2-1 process information of study				x.xx	
REQ-4-2-1-1	functional support				
REQ-4-2-1-2	...				

The UL make use of the competitive dialogue



Experiences of UL: competitive dialogue

Advantages	Disadvantages
<ul style="list-style-type: none">● increased quality of requirements catalogue● extensive insight into the solutions of the bidders● presentation of the actual maturity of the software● impression of customer focus and expertise of the candidates● involvement of future users that enhances the degree of popularity of AlmaWeb	<ul style="list-style-type: none">● time-consuming process● high demand of members of staff over a long period of time (40 employees)● large co-ordination complexity● high degree of complexity of development and assessment by a very detailed catalogue of requirements

Summary and future prospects

- selection process for CMS similar as ERP
- universities can benefit from experience of business sector
- universities are public organisations which feature specific requirements
- UL pursue a process-oriented approach
- UL will finish the implementation of CMS in 2013
- more and more universities will implement a CMS

Thank you very much
for your attention!

Jan Schreiter
schreiter@wifa.uni-leipzig.de

www.iwi.uni-leipzig.de

AlmaWeb
almaweb@uni-leipzig.de

www.uni-leipzig.de/almaweb